



CHAPMAN ACCESSIBILITY SUMMARY

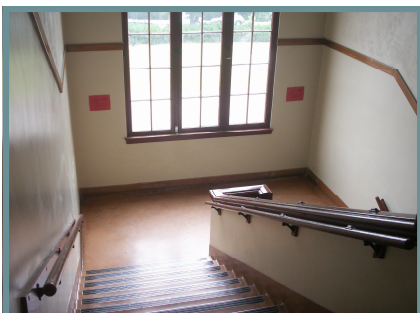


Chapman School
1445 NW 26th Avenue
Portland, OR 97210

SUMMARY

Common areas at Chapman are located on the ground floor, basement and second floor levels. Priority should be given to providing an elevator for multi-floor access at this school. The elevator, door hardware and plumbing on floors other than the main level comprise the majority of the upgrade work. The major accessibility upgrades for Chapman are summarized on this sheet.

This stair at Chapman is a good example which illustrates the typical PPS older multi-story building with discontinuous wood handrails, often set at a low childrens useable height.



Provide double height handrails

ACCESSIBILITY UPGRADES TO MEET 2008 ADA GUIDELINES

Site Elements	Accessible handrails at sloped walk Accessible sloped walk at entry Accessible ramp at portable classrooms
Accessible Route & Reach Ranges	Elevator for basement and second floor access Classroom lever handle hardware Accessible handrails at one stairway
Plumbing Elements	Basement accessible boys and girls restrooms Second floor unisex restroom Drinking fountains at basement and second floor
Communication Elements	Assisted listening devices at auditorium and balcony Signage
Special Spaces	Auditorium wheelchair spaces with companion seating Auditorium front exit stairs at two doors

COST BREAKDOWN

Cost information provided is based on 2009 estimated unit costs for direct construction including general contractor overhead. Additionally, estimated hard costs and soft costs provided by PPS have been included.

Site Elements	\$9,042
Accessible Route & Reach Ranges	\$336,403
Plumbing Elements	\$27,673
Communication Elements	\$8,199
Special Spaces	\$0
Built-In Elements	\$0
Recreational Facilities	\$32,106
Special Education	\$2,340
Total	\$415,763